

Pancakes Pancakes by Eric Carle  
Lesson—Created by Kari Duddeck

Materials:

- The book *Pancakes, Pancakes!* by Eric Carle
- Ball of yarn
- Web Cards

Procedure:

- Ask students if they have ever eaten pancakes before. Discuss what kinds of pancakes they like or how they like to eat them (plain, chocolate chip, blueberry, with syrup, without syrup, with fruit on top, etc.).
- Ask students to name some ingredients or tools needed to make pancakes. Record their answers so that they can see. (Things like flour, pancake mix, eggs, water, bowl, spoon, pan, recipe, etc.).
- Read the story *Pancakes, Pancakes!* by Eric Carle.
- Have students recall what happened in the story and what Jack had to do in order to get his pancake.
- Introduce the terms Natural Resources(Raw Materials)---Human Resources(Labor)—Capital Resources
- After reading story, have students add ingredients or tools needed to make pancakes to the list you did earlier in the lesson.
- Make a chart for students to see and decide as a group which items on your list would go under each of the following categories: Natural Resources---Human Resources—Capital Resources
- Have the class stand or sit in a large circle. Give each student a card (see below). Give a ball of yarn to the person holding the “Jack” card. While still holding on to the end of the yarn then should roll/gently toss the ball of yarn to someone else in the circle (except for the person holding the “Mother” card- they should be last). Have that person say what card they are holding and how the item on their card was used to help Jack get his pancake. They should hold on to the yarn and then toss the ball of yarn to someone else. It continues like that until everyone has been given the ball of yarn. The person holding the “Mother” card should be last (she was the person who brought all the things together to make the pancake). The yarn should be criss-crossed and look like a web. This shows students how all things are connected in making a final product.

**Assessment:**

Have students place cards under the correct category:

Natural Resources

Human Resources

Capital Resources

Web Cards

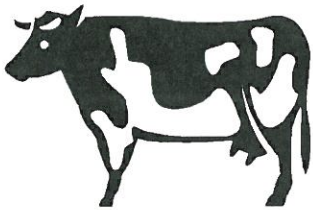
Jack



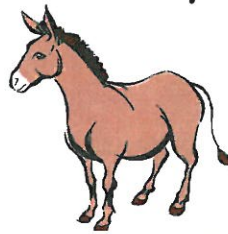
Mother



Cow



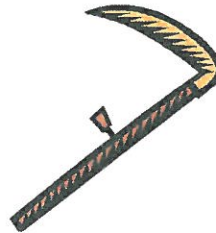
Donkey



Wheat



Sickle



Mill



Flour



Fork



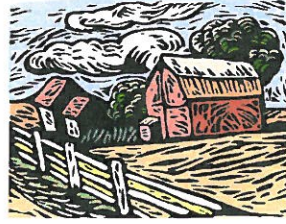
Milk



Egg



Woodshed



Hen



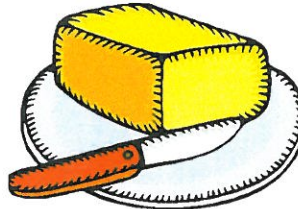
Ladle



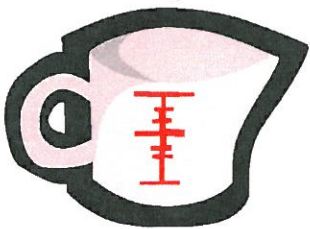
Churn



Butter



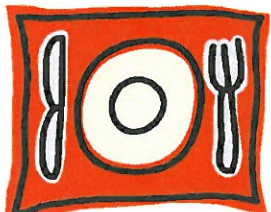
Cup



Bowl



Plate



Water

